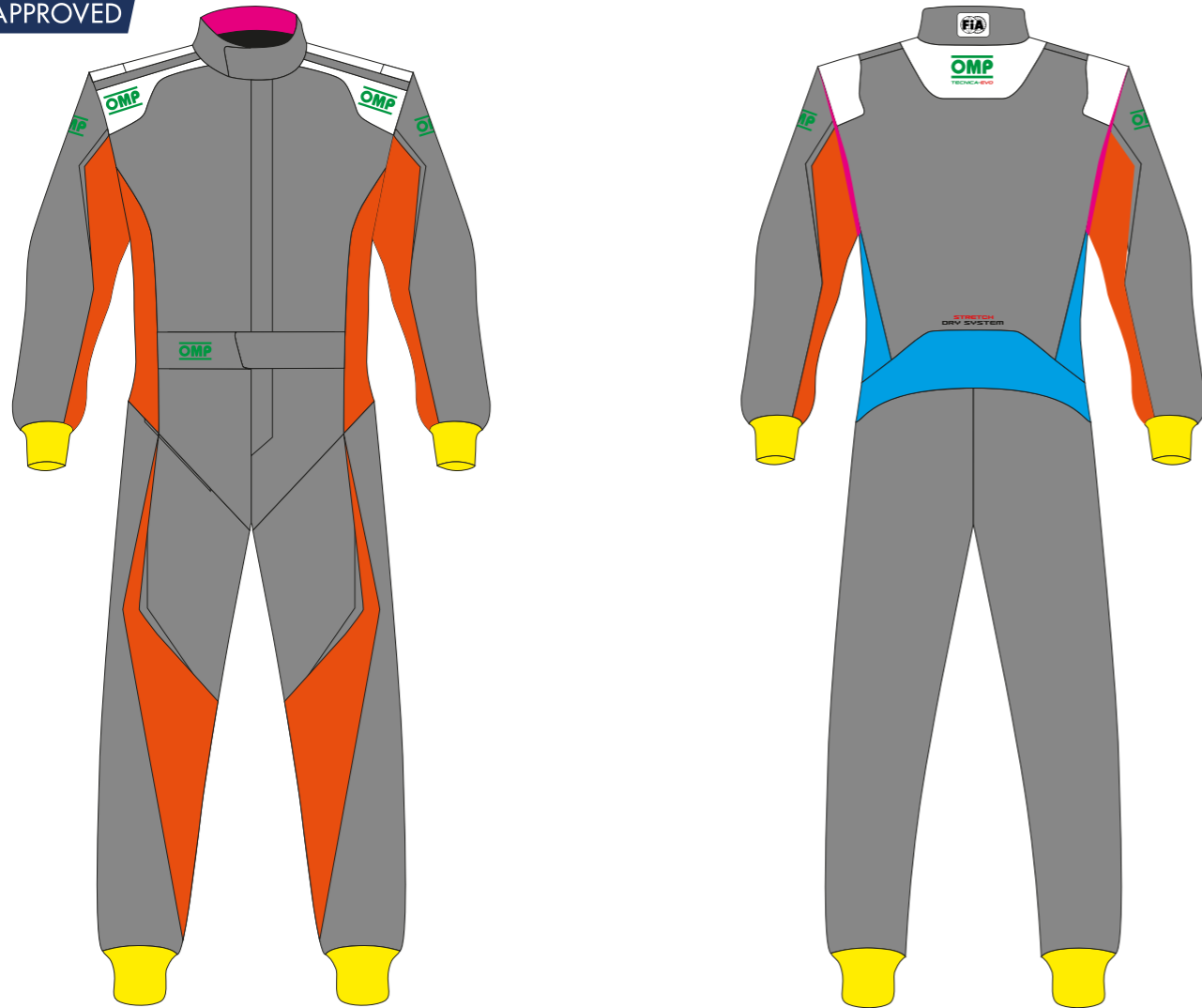


FIA 8856-2018

FIA APPROVED



\*while stocks last

## 1 GREY AREA SHINE FABRIC WHITE AREA FOR SHOULDER STRIPES, A DIFFERENT AND MONOCHROMATIC COLOR MUST BE USED

CYAN XTI-148-244	ROYAL BLUE XTI-148-041	NAVY BLUE XTI-148-042	VIOLET* XTI-148-V	VIOLET* XTI-148-2583	MAGENTA XTI-148-225C	RED XTI-148-061	FLUO ORANGE XTI-148-090	FLUO YELLOW XTI-148-099
WHITE XTI-148-020	SILVER XTI-148-081	DARK GREY XTI-148-082	BLACK XTI-148-071	JAGUAR GREEN XTI-148-033	FLAG GREEN XTI-148-032			

## 2 CYAN AREA STRETCH FABRIC - NOT PRINTABLE/EMBROIDABLE

ROYAL BLUE XTI-608-041	NAVY BLUE XTI-608-042	RED XTI-608-061	DARK GREY XTI-608-082	BLACK XTI-608-071	FLUO YELLOW XTI-608-099
---------------------------	--------------------------	--------------------	--------------------------	----------------------	----------------------------

## 3 PINK AREA INTERLOCK FABRIC - NOT PRINTABLE/EMBROIDERABLE

\*while stocks last

ROYAL BLUE XTI-102-041	NAVY BLUE XTI-102-042	RED XTI-102-061	DARK GREY XTI-102-082	BLACK XTI-102-071	SILVER XTI-102-081	WHITE XTI-102-020	ECRÙ XTI-102-028	GREEN* XTI-102-031
FLUO YELLOW XTI-102-099	YELLOW XTI-102-051							

## 4 YELLOW AREA WRIST AND ANKLE CUFF'S FABRIC

\*while stocks last

ROYAL BLUE XTI-105-N-041	NAVY BLUE XTI-105-N-042	RED XTI-105-N-061	DARK GREY XTI-105-N-082	BLACK XTI-105-N-071	SILVER XTI-105-N-081	WHITE XTI-105-N-020	ECRÙ XTI-105-N-022	YELLOW* XTI-105-N051	BROWN* XTI-105-N010
-----------------------------	----------------------------	----------------------	----------------------------	------------------------	-------------------------	------------------------	-----------------------	-------------------------	------------------------

## 5 ORANGE AREA DRY SYSTEM FABRIC - NOT PRINTABLE/EMBROIDERABLE

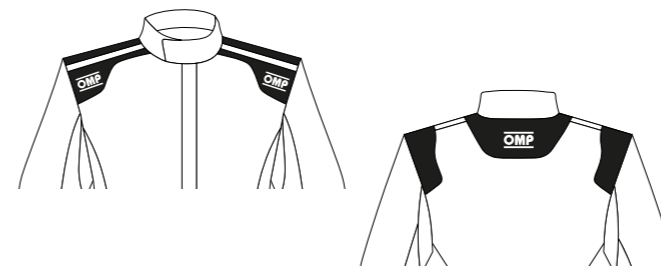
ROYAL BLUE XTI-604-041	RED XTI-604-061	DARK GREY XTI-604-082	BLACK XTI-604-071	WHITE XTI-604-020	FLUO YELLOW XTI-604-099
---------------------------	--------------------	--------------------------	----------------------	----------------------	----------------------------

## 6 OMP LOGO AND MODEL

The OMP logo has a fixed position on shoulders and back.

**IT CANNOT BE ALTERED OR REMOVED.**

**IT ALWAYS MUST BE WELL VISIBLE AND IN CONTRAST WITH THE BACKGROUND COLOR.**



The suit model has a fixed position on the back.

**IT CANNOT BE ALTERED OR REMOVED.**

**IT ALWAYS MUST BE WELL VISIBLE AND IN CONTRAST WITH THE BACKGROUND COLOR.**



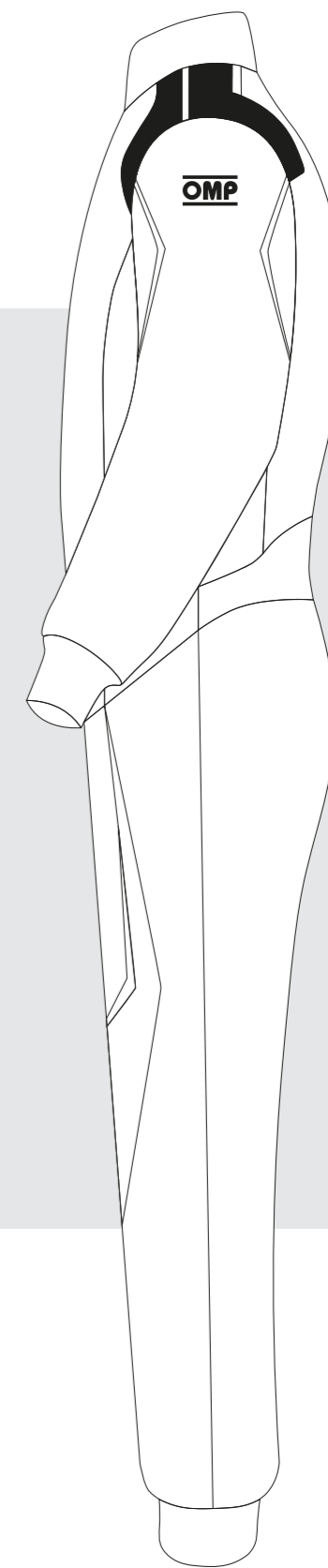
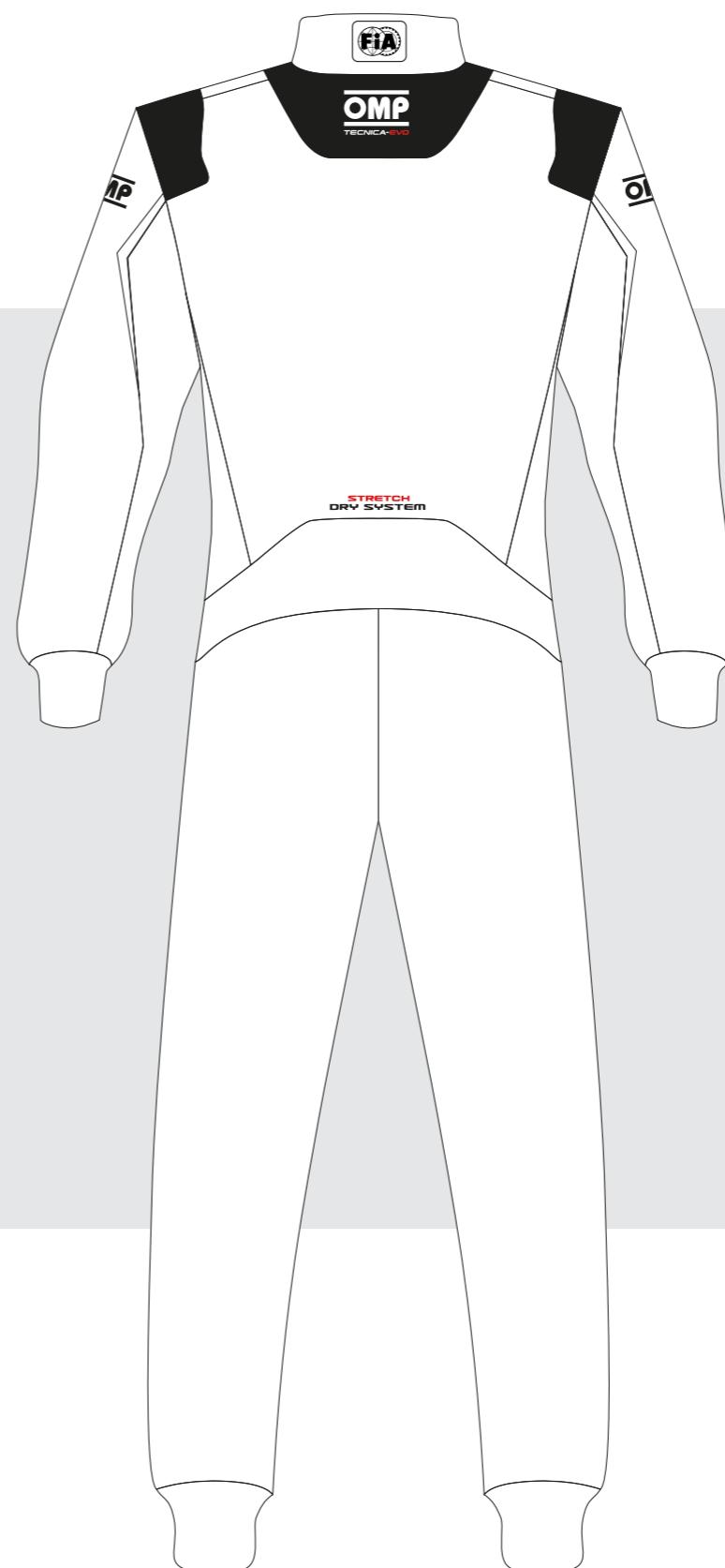
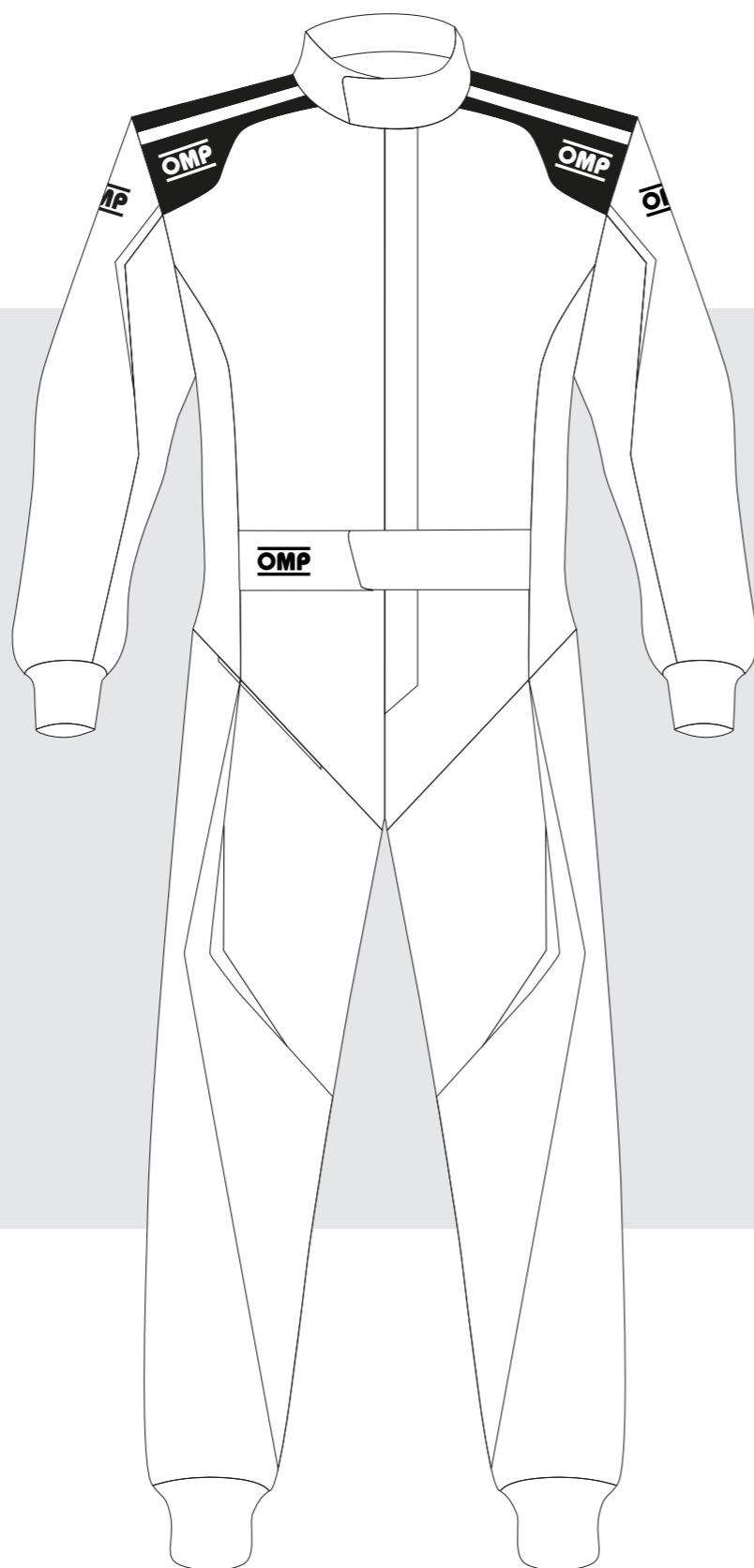
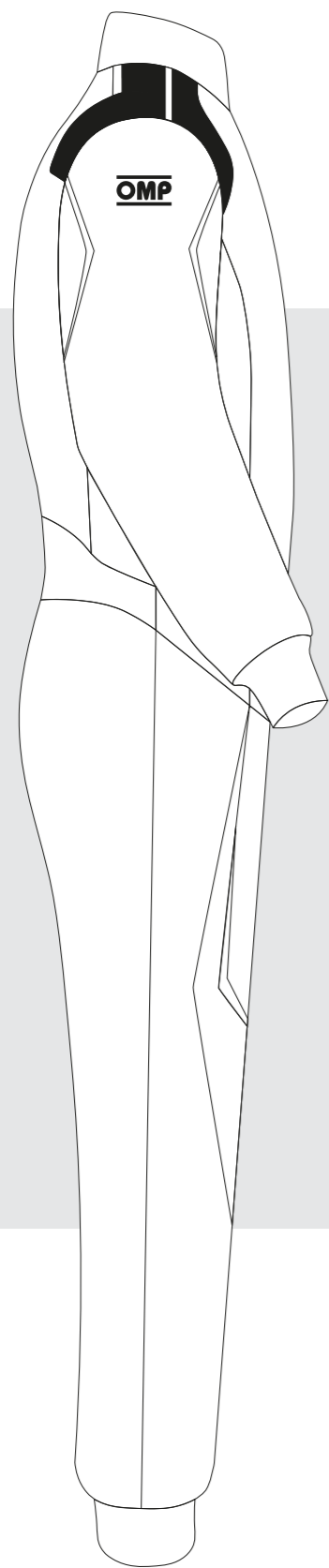
**Customers are aware that OMP is free to change the colour of its logo in case these indications are not respected in the sketch.**



CUSTOMER: \_\_\_\_\_

TEAM: \_\_\_\_\_

DRIVER NAME: \_\_\_\_\_



CUSTOMIZED SUIT CONFIGURATOR

IA0-1859 **TECNICA-EVO**

© OMP RACING SPA - ALL RIGHTS RESERVED

THIS DESIGN IS THE INTELLECTUAL PROPERTY OF OMP RACING SPA - ANY REPRODUCTION WITHOUT PERMISSION WILL BE PROSECUTED TO THE FULLEST EXTENT OF THE LAW. By approving this sketch, the customer acknowledges that, during the process of manufacturing, variations may occur in colors and other minor aspects, because of the use of different technologies for the acquisition and reproduction of images, and for the making of the suit itself. OMP is not responsible for such variations and deviations. For further information: [www.ompracing.com](http://www.ompracing.com)

DATE: \_\_\_\_\_ REV. \_\_\_\_\_